

**Official Tech Documents**  
The better way to get your HotBrick product up and running

## Firewall HotBrick SoHo 401 VPN

## How To

How To Remotely manage the 401 VPN

### USA

7243 NW 54th Street  
33166  
Miami, FL  
[www.hotbrick.com](http://www.hotbrick.com)  
[support@hotbrick.com](mailto:support@hotbrick.com)

### EUROPE

Generatorstraat 26  
Hengelo (Ov), 7556 RC  
Amsterdam - Netherlands  
[www.hotbrick.nl](http://www.hotbrick.nl)  
[support@hotbrick.nl](mailto:support@hotbrick.nl)

### BRAZIL

Francisco Tramontano, 100  
05686-010  
São Paulo/SP  
[www.hotbrick.com.br](http://www.hotbrick.com.br)  
[suporte@hotbrick.com.br](mailto:suporte@hotbrick.com.br)

## Remotely managing the 401 VPN

The hotbrick 401 VPN can be remotely accessed from every IP address on the internet. Also you can restrict the addresses from which you can manage the unit.

- Go to "Other"
- "Remote Admin"
- Enable "Remote Web-based setup"
- Choose the access options that you want.
- The default port number setting is 8080. It is better to use another port, such as 53000, because 8080 is a well known port and is more likely to be scanned.
- Press "save"

Note that this unit must be reached with HTTPS

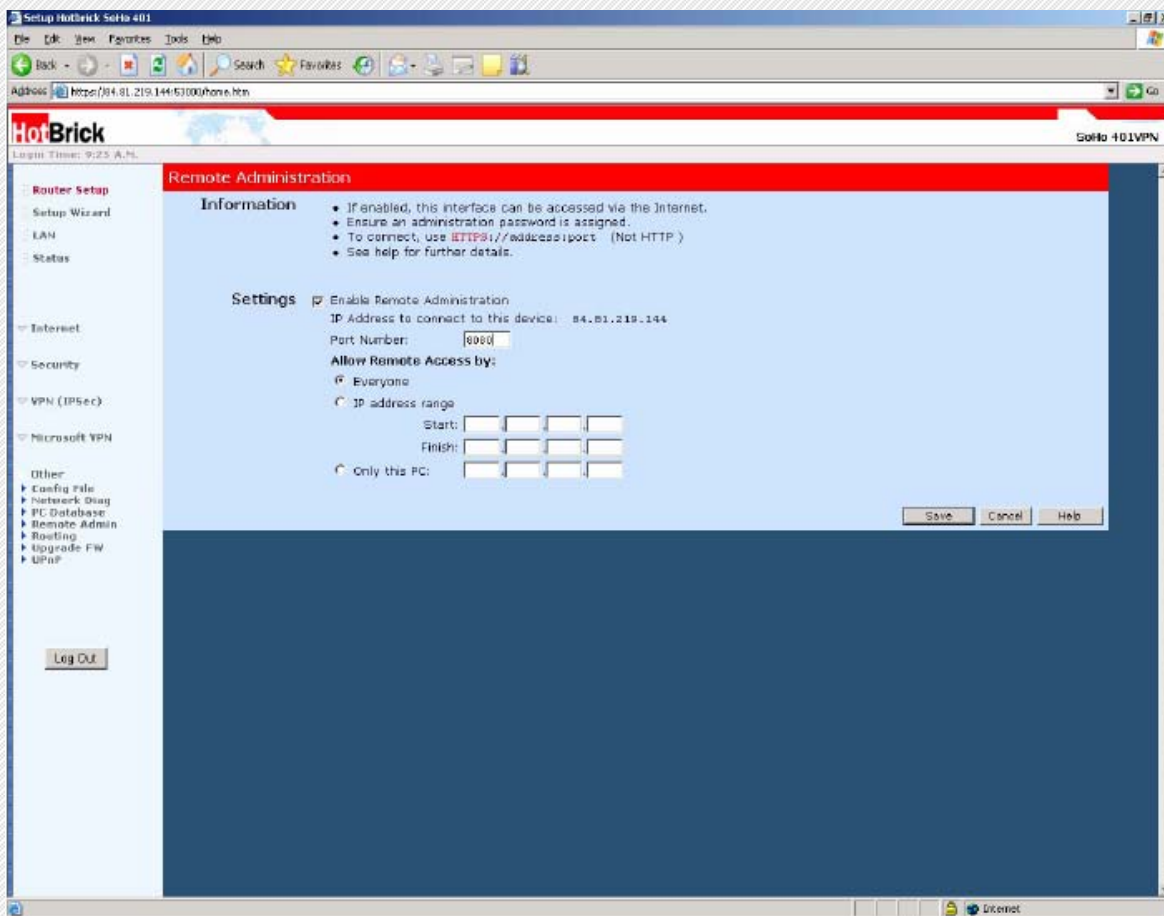


Fig. 1: Configuring the Remote Management