

Official Tech Documents

The better way to get your HotBrick product up and running

Firewall HotBrick LB-2 / LB-2 VPN

How To

How To Remotely manage the LB2/LB2 VPN

USA

7243 NW 54th Street
33166
Miami, FL
www.hotbrick.com
support@hotbrick.com

EUROPE

Generatorstraat 26
Hengelo (Ov), 7556 RC
Amsterdam - Netherlands
www.hotbrick.nl
support@hotbrick.nl

BRAZIL

Francisco Tramontano, 100
05686-010
São Paulo/SP
www.hotbrick.com.br
suporte@hotbrick.com.br

Remotely managing the LB2/LB2 VPN

The hotbrick LB2/LB2 VPN can be remotely accessed from every IP address on the internet. Also you can restrict the addresses from which you can manage the unit.

- Goto "Advanced Setup"
- "Advanced feature "
- Enable "Remote Web-based setup"
- The default port number setting is 8080. It is better to use another port, such as 53000, because 8080 is a well known port and is more likely to be scanned.
- If you leave the allowed IP range as it is, it acts as a wildcard and every IP address is allowed 0.0.0.0 ~ 0.0.0.0
- If you enter 82.168.118.231 ~ 82.168.118.231 you can reach it from this IP only.
- If you enter 82.168.118.231 ~ 82.168.118.239 you can reach it from these IP's only.
- Press submit

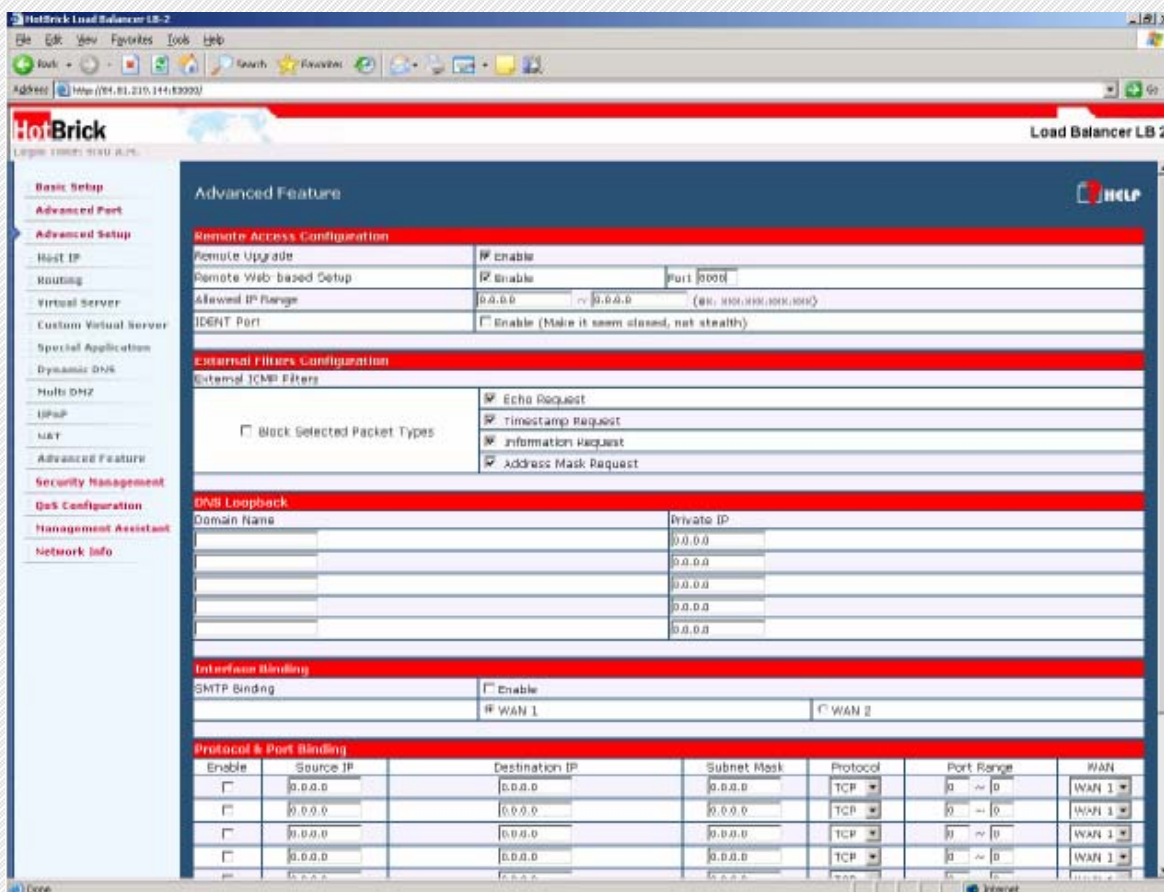


Fig. 1: Remote Access Configuration